

Zubehör für die Baureihe B

Für folgende Stellantriebstypen:

■ BN ■ BS ■ BE ■ BF ■ BT

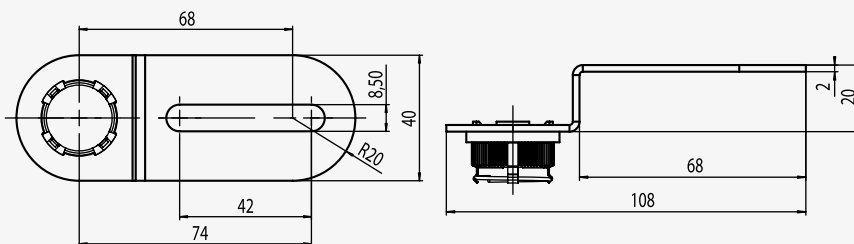


■ Klappenhebel + Kugelgelenk

(Edelstahl - 1.4305)

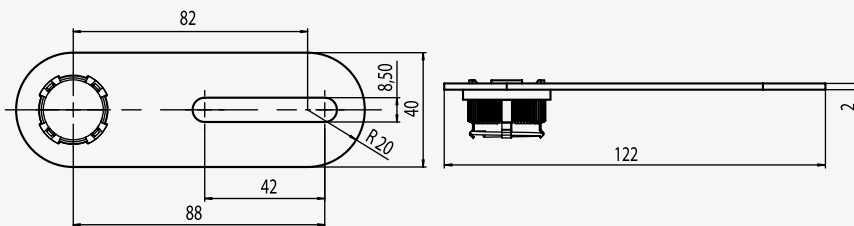
Bestell-Nummer neu	Beschreibung	Bestell-Nr. alt
E-AB-CAB74S	Klappenhebel - Edelstahl, gebogen	E-ACR
E-AB-CAF88S	Klappenhebel - Edelstahl, flach	E-ACR2
E-AB-CAB200S	Klappenhebel - Edelstahl, gebogen 200 mm	E-ACRL
E-AB-BJB	Kugelgelenk - Edelstahl	E-ABJ

E-AB-CAB74S - Alle Angaben in mm



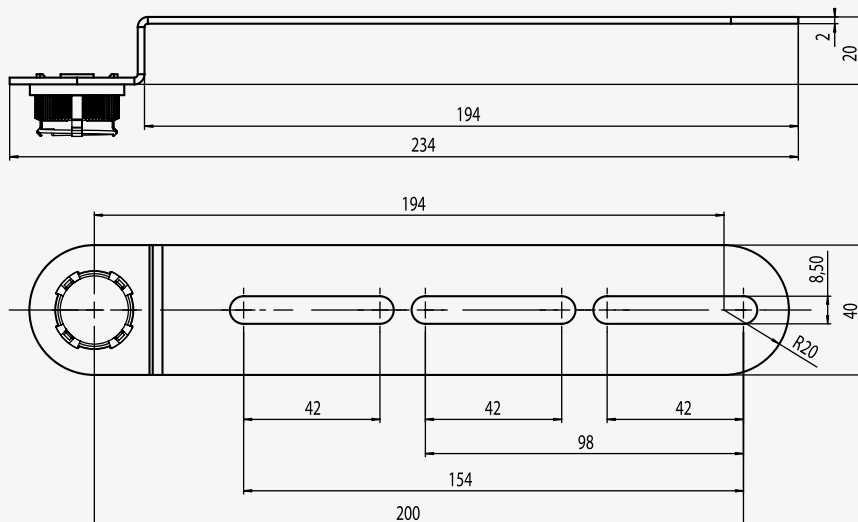
E-AB-CAB74S

E-AB-CAF88S - Alle Angaben in mm



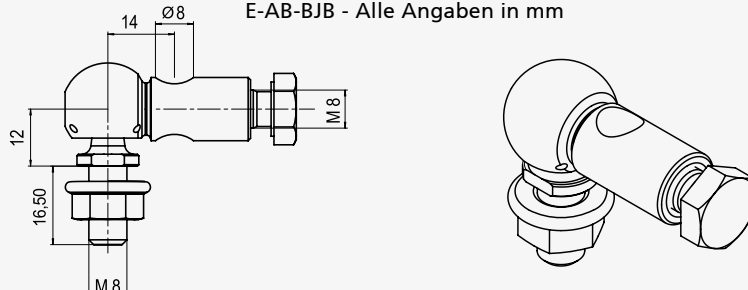
E-AB-CAF88S

E-AB-CAB200S - Alle Angaben in mm



E-AB-CAB200S

E-AB-BJB - Alle Angaben in mm



E-AB-BJB